



# Virginia Healthcare Workforce Briefs

Indicators from the Bureau of Labor Statistics'  
 Current Employment Statistics Survey  
**Series 1: State & National Employment**

Series 1, Issue 75

June 2018

## Highlights

- ◆ According to preliminary estimates, Virginia's Health Care & Social Assistance (HC&SA) sector experienced no employment change in May. Regardless, year-to-date HC&SA employment growth in the state has been strong in 2018. So far this year, Virginia's HC&SA sector has created 3,800 jobs. At the same point in 2017, only 900 HC&SA jobs had been added across the state.
- ◆ Although there was no HC&SA employment growth in the state in May, Virginia's total nonfarm payroll still increased by 6,200 during the month. This increase represents the largest one-month increase in the state's total nonfarm payroll since February.
- ◆ The national HC&SA sector added 31,700 new jobs in May. This gain translates into a one-month annualized employment growth rate of 1.9%. This growth rate is slightly below the long-term average. Over the past 12 months, employment in the national HC&SA sector has grown by 2.0%.
- ◆ The nation's total nonfarm payroll enjoyed strong growth in May with an increase of 223,000, a gain that represents a one-month annualized growth rate of 1.8%. This result also represents the first time since February in which the nation's total nonfarm payroll has increased by more than 200,000.

### Inside this Brief:

Virginia HC&SA Employment	2
Virginia Employment	2
National Employment	3
State Employment Growth	3
About the Data	4

*Data in the report are seasonally adjusted. Self-employed persons, including health professionals in private practice, are not included.*

## Data in Brief

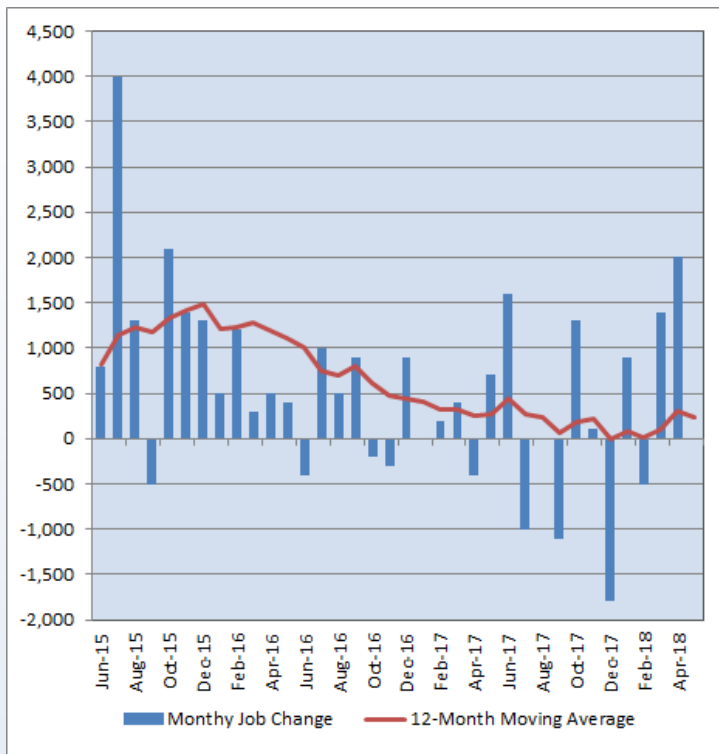
Seasonally Adjusted*	Employment, in Thousands				Growth Rate, Annualized		
	May 2017	Feb. 2018	Apr. 2018	May 2018	12 Month	3 Month	1 Month
<b>Nonfarm, Total</b>							
Virginia	3,947.5	3,983.2	3,994.3	4,000.5	1.3%	1.7%	1.9%
National	146,299.0	148,125.0	148,439.0	148,662.0	1.6%	1.5%	1.8%
<b>Health Care &amp; Social Assistance</b>							
Virginia	434.5	434.0	437.4	437.4	0.7%	3.2%	0.0%
National	19,461.6	19,758.3	19,821.9	19,853.6	2.0%	1.9%	1.9%
<b>All Other Nonfarm</b>							
Virginia	3,513.0	3,549.2	3,556.9	3,563.1	1.4%	1.6%	2.1%
National	126,837.4	128,366.7	128,617.1	128,808.4	1.6%	1.4%	1.8%

Preliminary estimates are italicized

\*Seasonally adjusted data are adjusted by the Bureau of Labor Statistics to account for weather, holidays and other seasonal changes. Economists use seasonally adjusted data to reveal underlying trends over time. This series uses seasonally adjusted data exclusively. When comparing data in this series to other HWDC series, or publications from other sources, it is important to note whether the data reported have been seasonally adjusted.

## Virginia HC&SA Employment

**Figure 1: Monthly Change in Employment in Virginia’s Health Care & Social Assistance Sector, Seasonally Adjusted.**



According to preliminary data released on Friday, June 15, 2018, by the U.S. Department of Labor, Bureau of Labor Statistics, there was no employment growth in Virginia’s HC&SA sector in May. Despite the fact that there was no change in Virginia’s HC&SA employment during the month, job growth in Virginia’s HC&SA sector has been strong so far in 2018. So far this year, Virginia’s HC&SA sector has produced 3,800 new jobs. This year-to-date employment gain far exceeds the 900 HC&SA jobs created through the first five months of 2017.

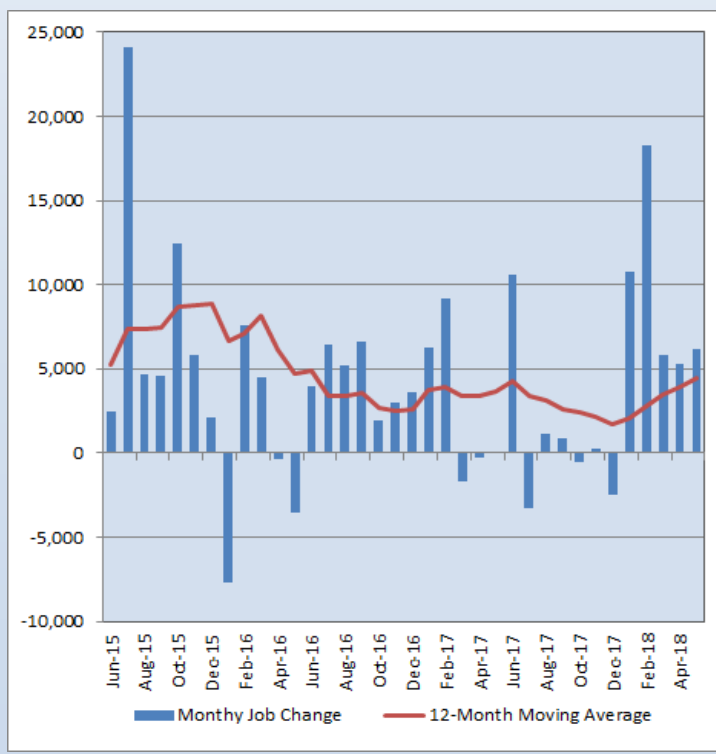
This strong year-to-date employment growth is due mainly to the job gains observed in March and April. In March, employment in Virginia’s HC&SA sector increased by 1,400. The following month, Virginia’s HC&SA sector added an even more impressive 2,000 jobs. This represented the first time since 2015 in which Virginia’s HC&SA sector created at least 1,000 new jobs in consecutive months. Thanks to these gains, employment in Virginia’s HC&SA sector has grown at a 3.2% annualized rate over the past three months, which is nearly double the statewide average.

## Virginia Employment

Although Virginia’s HC&SA sector did not create any new jobs in May, this did not prevent the state’s total nonfarm payroll from enjoying its largest one-month gain since February. In May, Virginia’s total nonfarm payroll increased by 6,200. This gain represents a one-month annualized growth rate of 1.9%. In addition, this gain represents the fifth consecutive month in which Virginia’s total nonfarm payroll has increased. It has been more than one year since Virginia’s total nonfarm payroll has increased in at least five consecutive months.

May’s results suggest improving employment growth in Virginia’s overall economy. So far this year, the state’s total nonfarm payroll has increased by 46,400. This year-to-date gain is far higher than the increase of 13,600 over the first five months of 2017. In fact, this gain represents the strongest start to a new year since 2015. In addition, the 12-month moving average of the change in Virginia’s total nonfarm payroll has now increased for five consecutive months and reached its highest value in nearly two years. Over the past year, Virginia’s total nonfarm payroll has increased by an average of 4,417 jobs per month.

**Figure 2: Monthly Change in Employment in Virginia’s Total Non-farm Payroll, Seasonally Adjusted.**

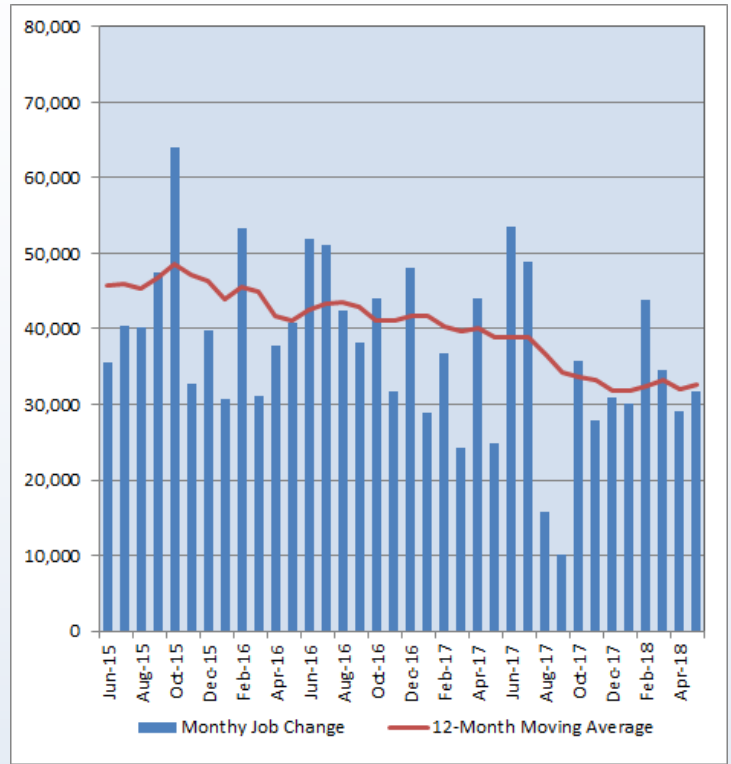


### National Employment

The national HC&SA sector created 31,700 new jobs in May. This increase represents a one-month annualized employment growth rate of 1.9%. Although this gain is higher than the 29,100 HC&SA jobs created in April, May’s HC&SA employment growth was still slightly below the long-term average for this sector. Over the past year, the national HC&SA sector has created an average of 32,667 jobs per month. This gain translates into a 12-month employment growth rate of 2.0%. Regardless, both short-term and long-term HC&SA employment growth exceed the national average.

Although the growth in the nation’s total nonfarm payroll still lags behind that of the national HC&SA sector, May’s employment gains were still impressive. The nation’s total nonfarm payroll increased by 223,000 in May, which represents a one-month annualized growth rate of 1.8%. This figure exceeds the comparable longer-term averages for the nation’s total nonfarm payroll. Over the past three months, the nation’s total nonfarm payroll has increased by an average of 179,000 jobs per month, a gain that translates into a 1.5% annualized employment growth rate. This is also below its current 12-month growth rate of 1.6%.

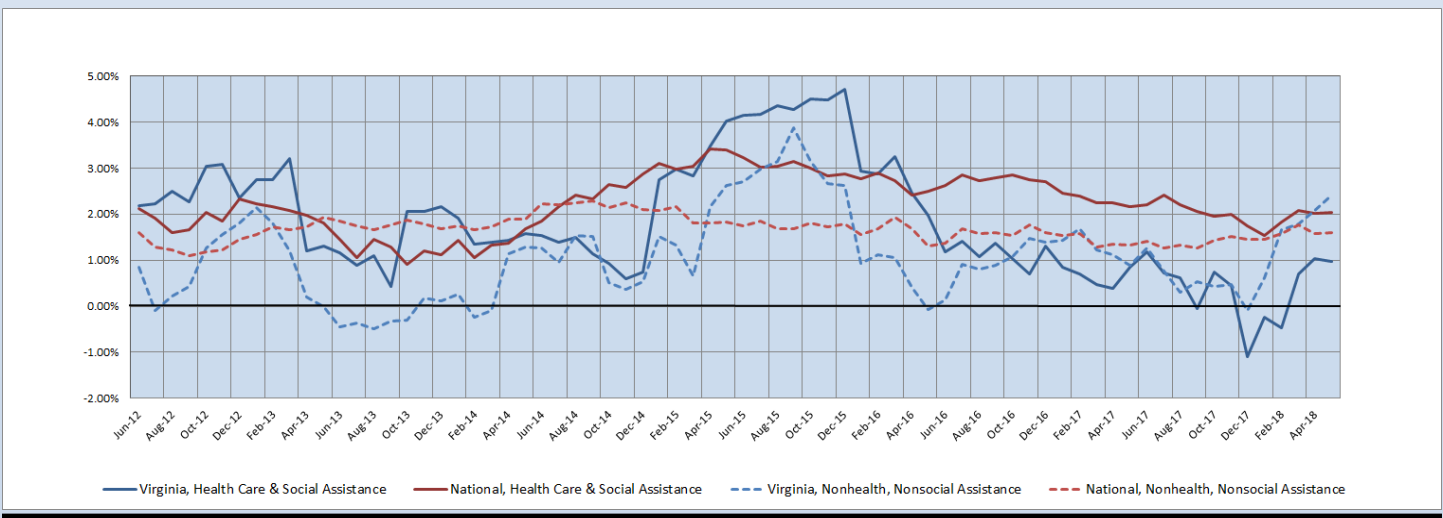
**Figure 3: Monthly Change in Employment in National Health Care & Social Assistance Sector, Seasonally Adjusted**



### State Employment Growth

The six-month moving average of the employment growth rate in Virginia’s HC&SA sector fell slightly in May from 1.03% to 0.98%. On the other hand, the six-month moving average of the growth rate in Virginia’s total nonfarm payroll increased from 2.08% to 2.42% in May, thereby reaching its highest level in more than two years. In fact, this moving average has nearly quadrupled since the beginning of the year. Meanwhile, the six-month moving average of the employment growth rate in the national HC&SA sector experienced a small uptick from 2.01% to 2.05%. This moving average has seen little fluctuation over the past three months. As for the nation’s total nonfarm payroll, its six-month growth rate moving average remained at 1.59% during the month.

**Figure 4: Six-Month Moving Average, Employment Growth, Seasonally Adjusted**



**Healthcare Workforce  
Data Center**

Perimeter Center  
9960 Mayland Drive, Suite 300  
Henrico, VA 23233-1463

Phone: (804) 367-2115  
Fax: (804) 527-4434  
E-mail: [hwdc@dhp.virginia.gov](mailto:hwdc@dhp.virginia.gov)

[www.dhp.virginia.gov/hwdc/](http://www.dhp.virginia.gov/hwdc/)

*HWDC Staff:*

Elizabeth Carter, Ph.D. <i>Executive Director</i>	Yetty Shobo, Ph.D. <i>Deputy Director</i>
Laura Jackson <i>Operations Manager</i>	Christopher Coyle <i>Research Assistant</i>

Follow us on. . .

Tumblr: <http://vahwdc.tumblr.com/>

The Department of Health Professions Healthcare Workforce Data Center works to improve the data collection and measurement of Virginia's healthcare workforce through regular assessment of workforce supply and demand issues among the 80 professions and 350,000 practitioners licensed in Virginia by DHP.

The HWDC collects data on Virginia's licensed health professionals through surveys completed during the online license renewal and application process. Survey results and data may be accessed on our website: [www.dhp.virginia.gov/hwdc/](http://www.dhp.virginia.gov/hwdc/).

The HWDC also provides a series of Virginia Healthcare Workforce Briefs based on data collected by the US Department of Labor's Bureau of Labor Statistics and the US Department of Commerce' Bureau of Economic Analysis.

Virginia Healthcare Workforce Briefs:

Series 1: State & National Employment (Monthly)

Series 2: Virginia Regional Employment (Monthly)

Series 3: Income & Compensation (Quarterly)

---

**About the Data**

Data in this report are from the US Department of Labor, Bureau of Labor Statistics' Current Employment Statistics program. The CES program surveys about 143,000 businesses and government agencies monthly. Unless otherwise noted, this series uses seasonally-adjusted data that removes seasonal variations related to weather, holidays, weekends, seasons and other predictable variations. This allows us to better examine underlying trends in the labor market. Data from recent months are preliminary and subject to revision in future releases from the CES. Revisions will be reported in future editions of this series. Unless otherwise noted, the CES data presented in this series:

**Includes:**

- ◆ Data on employed individuals drawing a paycheck (payroll employees).
- ◆ All employees, regardless of role, occupation or hours worked.
- ◆ HC&SA employees in the private sector only.
- ◆ Persons employed by health professionals in private practice.
- ◆ Both government and private sector workers in nonfarm employment data.

**Does not include:**

- ◆ Self-employed workers or volunteers, including health professionals in private practice.
  - ◆ HC&SA employees in the public sector. (These are counted as government workers in monthly reports).
  - ◆ Information on hours worked or the quality of employment.
  - ◆ Government workers in HC&SA level data. (Government workers, regardless of occupation and role, are classified as public sector employees).
-